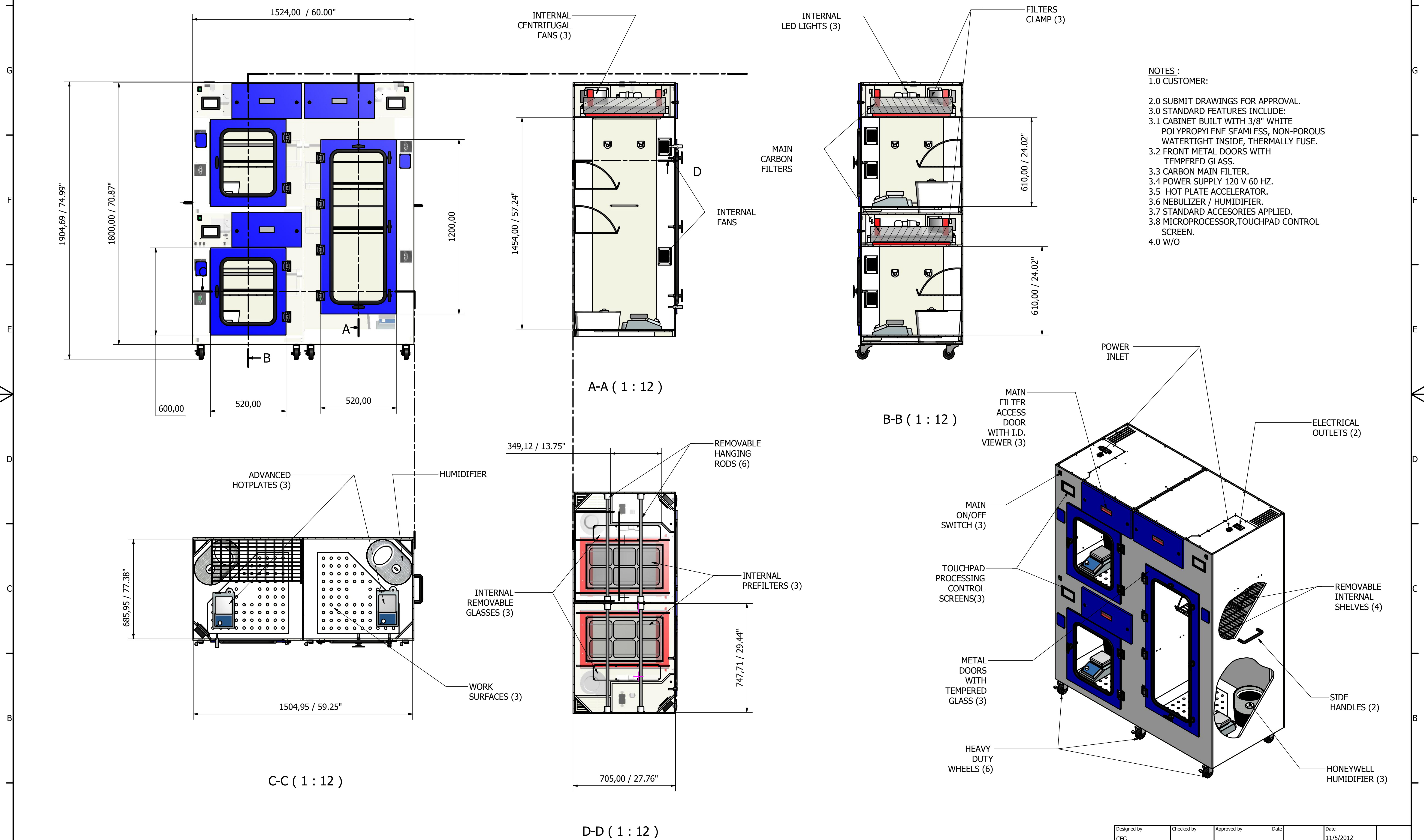


REVISION HISTORY				
ZONE	REV	DESCRIPTION	DATE	APPROVED
CHAMBER	1	METAL SHELVES	1/02/2013	P CH
BOTTOM LEVEL	2	POWER CONNECTION	6/07/2014	P CH
WORK SURFACE	3	PC-HUMIDIFIER	7/21/2015	P CH
WORK SURFACE	4	HONEYWELL HUMIDIFIER	1/04/2016	P CH
FRONT	5	BLACK SCREEN BEZEL	5/13/2020	P CH

### SAFEFUME AUTOMATIC CYANOACRYLATE FUMING CHAMBER



- NOTES :
- 1.0 CUSTOMER:
  - 2.0 SUBMIT DRAWINGS FOR APPROVAL.
  - 3.0 STANDARD FEATURES INCLUDE:
    - 3.1 CABINET BUILT WITH 3/8" WHITE POLYPROPYLENE SEAMLESS, NON-POROUS WATERTIGHT INSIDE, THERMALLY FUSE.
    - 3.2 FRONT METAL DOORS WITH TEMPERED GLASS.
    - 3.3 CARBON MAIN FILTER.
    - 3.4 POWER SUPPLY 120 V 60 HZ.
    - 3.5 HOT PLATE ACCELERATOR.
    - 3.6 NEBULIZER / HUMIDIFIER.
    - 3.7 STANDARD ACCESSORIES APPLIED.
    - 3.8 MICROPROCESSOR, TOUCHPAD CONTROL SCREEN.
  - 4.0 W/O

GENERAL TOLERANCES IN MILLIMETERS	
LINEAR & ANGULAR	FORM & POSITION
ISO 2768 V	ISP 2768 L

Designed by CFG	Checked by	Approved by	Date 11/5/2012	Date
AIR SCIENCE USA			CA60T3CH FUMING CHAMBER	
CA60T3Ch-Gassem			Edition 5	Sheet 1 / 1