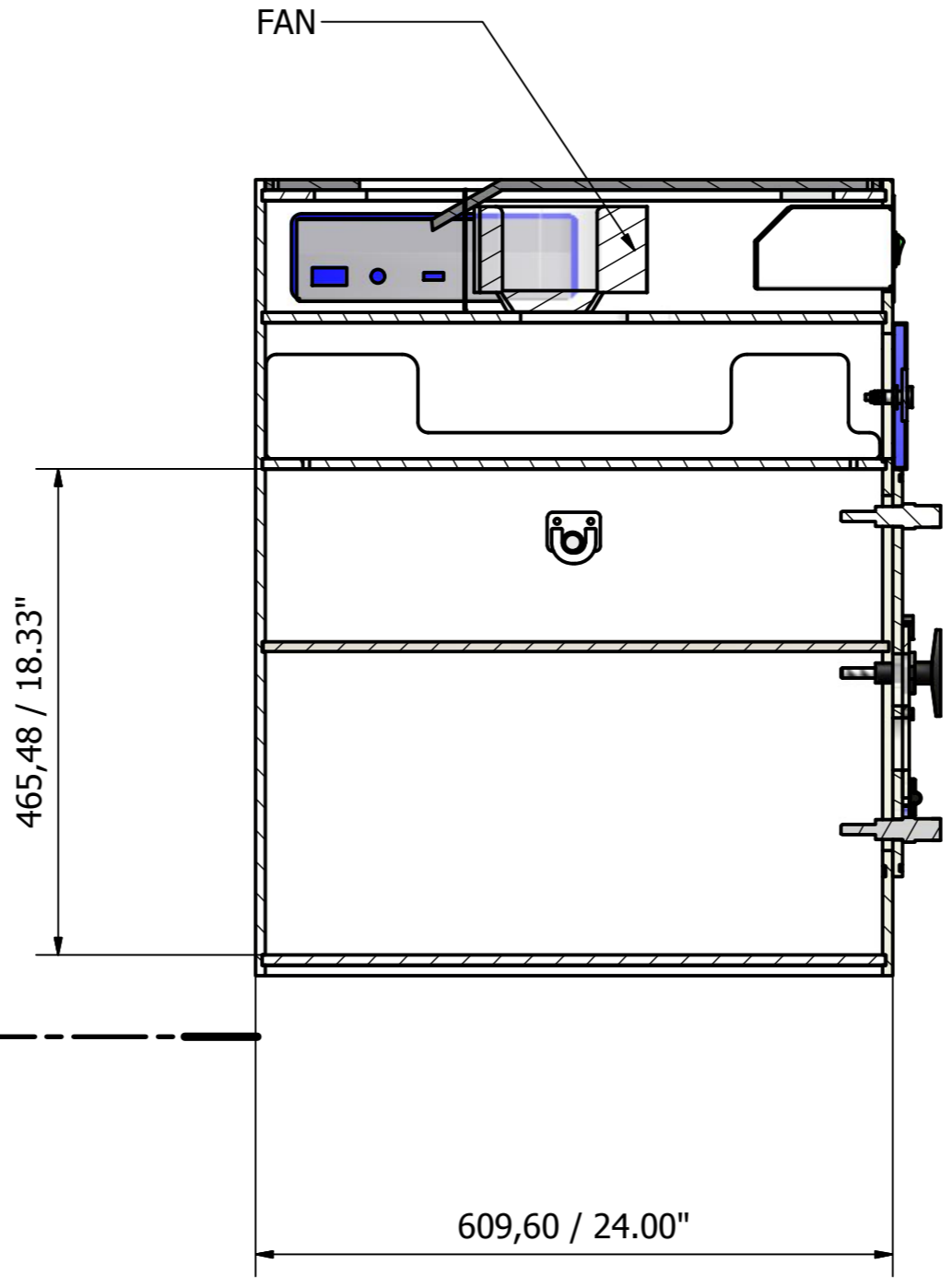
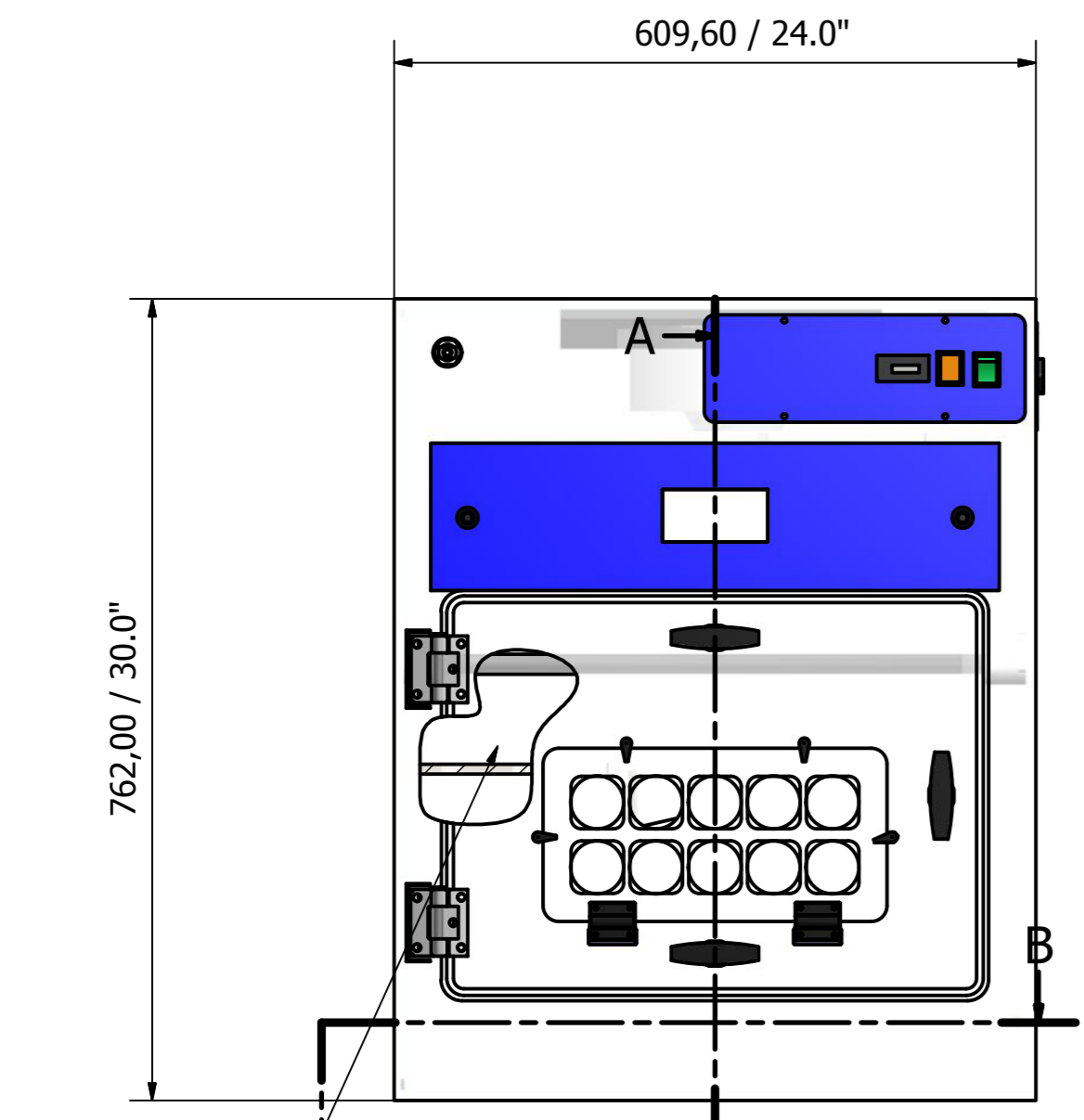
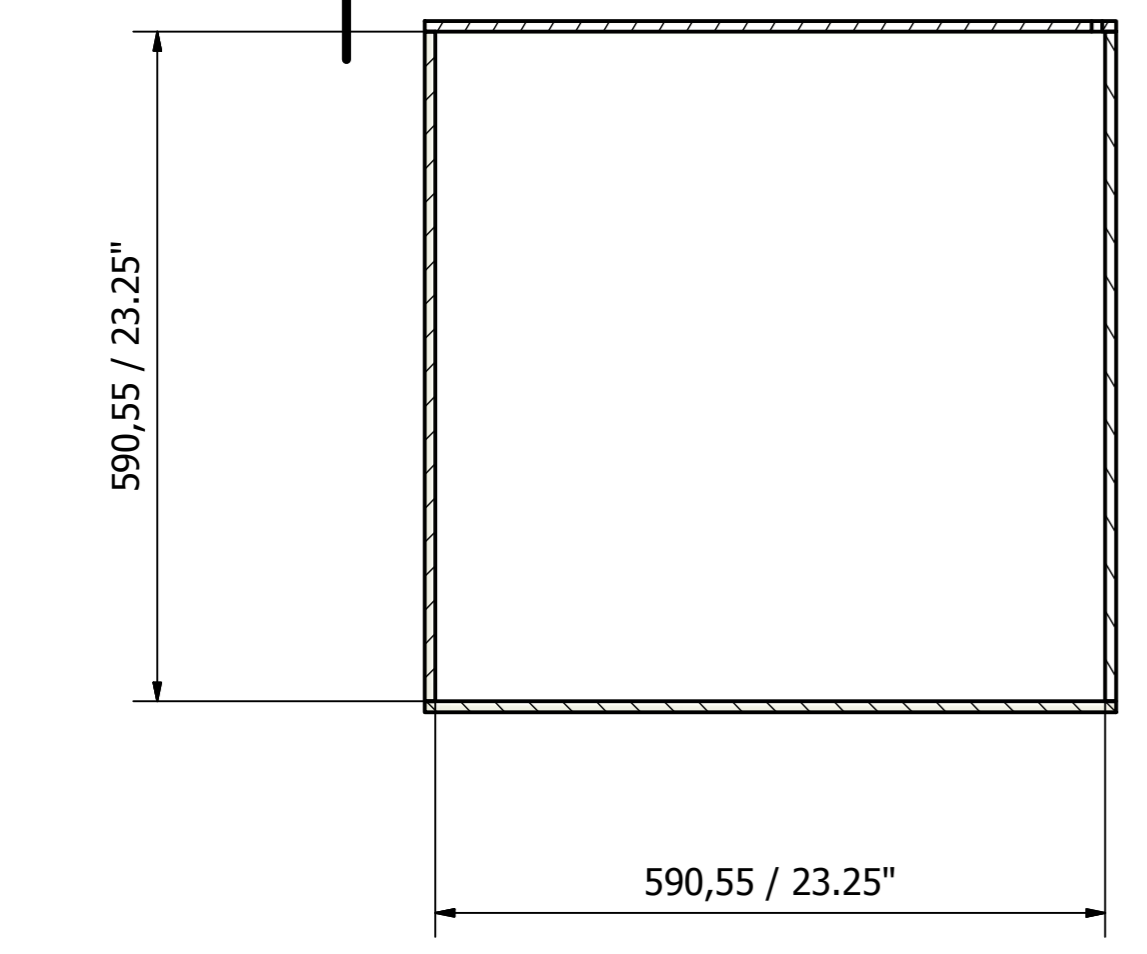


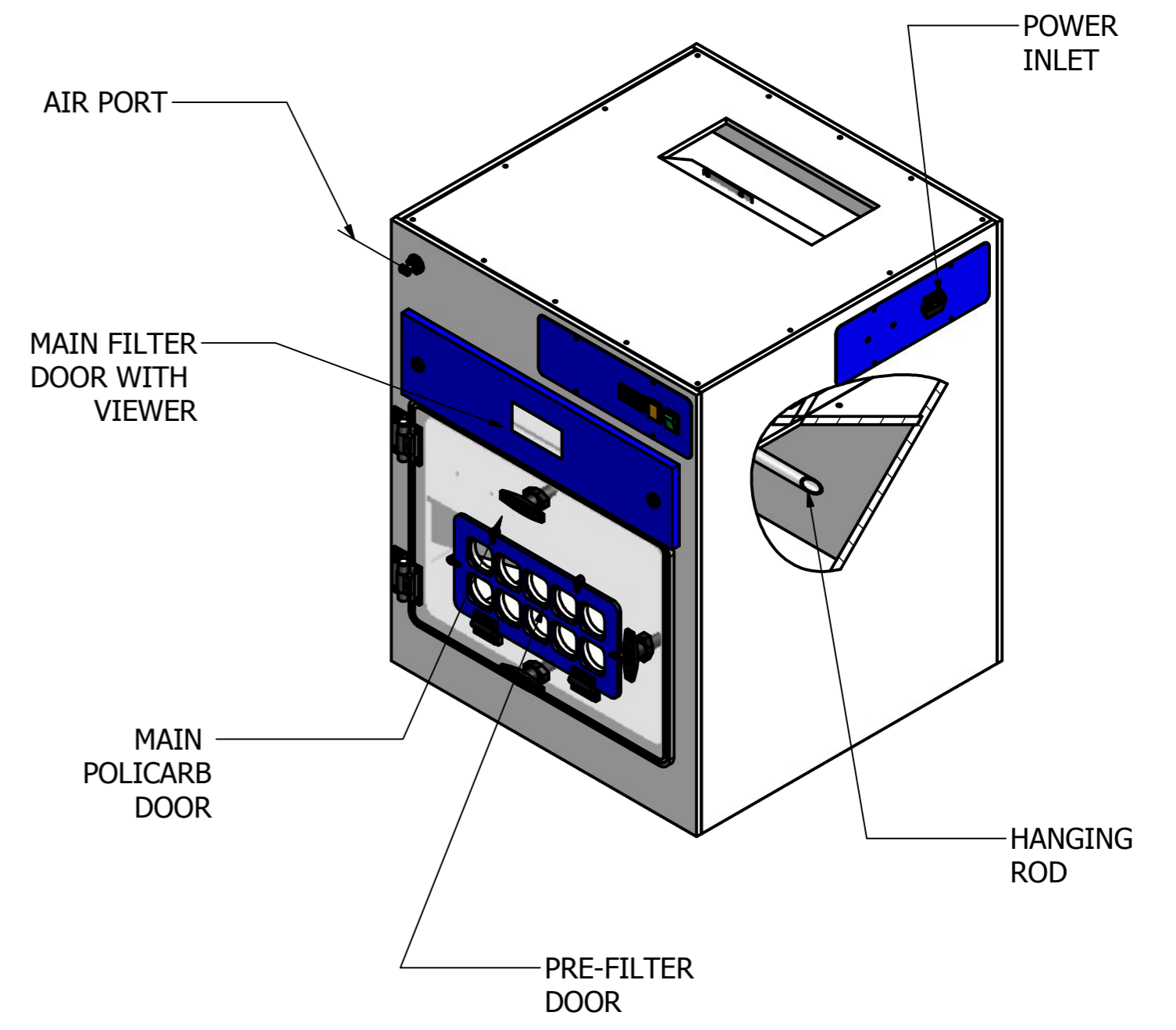
REVISION HISTORY				
ZONE	REV	DESCRIPTION	DATE	APPROVED
RIGHT SIDE	1	METAL SHOEBOX	10/30/2015	P CH



A-A (0.15 : 1)



B-B (0.15 : 1)



NOTES :

- 1.0 CUSTOMER:
- 2.0 SUBMIT DRAWING FOR APPROVAL.
- 3.0 STANDARD FEATURES INCLUDE:
 - 3.1 WELDED CONSTRUCTION BODY 3/8" WHITE POLYPROPYLENE.
 - 3.2 FRONT DOOR MADE IN 3/8" POLYCARBONATE.
 - 3.3 MAIN FILTERS: ASTM001H, MIS10030H
 - 3.4 POWER SUPPLY 110 V 60 HZ.
- 4.0 W/O

Designed by CFG	Checked by	Approved by	Date 8/22/2012	Date
AIR SCIENCE USA		DRYING CABINET DC-24W24D30H		
		DC-24S-GAssem.R1	Edition 1	Sheet 1 / 1